

Peak Area Leadership in Science

Professional Development Opportunities
for Secondary Science Teachers

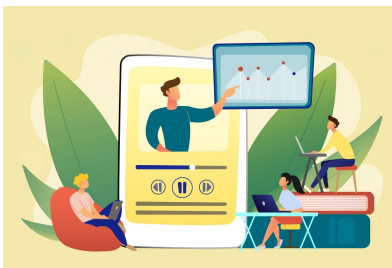
Three Ways to RSVP:

- www.sciencehubs.org
- email: RSVP@sciencehubs.org
- call Tammy Johnnie at
(719) 337-1552

Brave New Worlds in Learning: Approaching our profession in new ways using best practices in remote & hybrid Learning

Wednesday, October 28, 2020 4:00 pm – 8:00 pm

Facilitated by: **Tim Blesse**, Teacher Programs Coordinator, DMNS

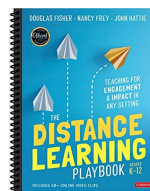


This will be a Virtual Session using ZOOM.

Confirmed participants will receive the link the day before the workshop.

Remember to Join Us Virtually...

- Please register ASAP on or after 10/11. You will need to respond to a confirmation email. Spots are limited ! [Be sure to cancel your reservation if you are unable to attend.]
- Check your technology in advance and hope for a great connection the day of the workshop.
- For the workshop, find a nice quiet and comfortable spot where you can actively engage in the morning's activities.
- Feel free to provide your own beverage and snacks.
- Have your science notebook handy for taking notes !
- Each confirmed participant will receive a great book that will be available for pickup locally following the workshop.



What will you learn ?

How do we continue to capitalize on the huge benefits of social constructivist learning approaches when the element of physical proximity is not available? Recent events have catapulted members of our profession into a new period of learning that is both exciting and daunting. In this engaging workshop plan to:

- **Explore** the Question How do we know what works in Distance Learning? [Use Case Studies to determine what is needed for effective Distance Learning]
- **Examine** different Models of Hybrid Learning
- **Learn** from the successes & failures of some real classroom teachers about: The Role of Technology in distance learning; How we use technology to meet learning goals; Technology Tools to Fit the Task; Working Memory related to distance learning; Building Agency & Community; and Effective Planning for distance learning lessons – An Introduction to the SOAP Model.

This workshop is made possible by
GENEROUS funding from the:

**FOUNDATION
MIKKELSON**

& Jim Mikkelson

Providing Support for Teachers

to Improve Technical Knowledge and Skills

Additional Funding by



AF UNITED STATES
AIR FORCE ACADEMY

Find us on



&



Search for **Peak Area Leadership
in Science**

Check out our website at
www.sciencehubs.org

Photo at top provided by Rose DiCenso.

In compliance with Colorado School of Mines regulations, children of participants may not attend Hub meetings or activities.